



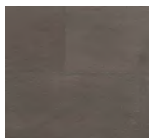
Castlegar Collection

Premium Engineered Hardwood



Elegance To Walk On

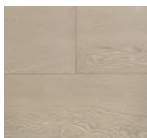
Come home to the wide plank, softly wire brushed elegance of the Castlegar Collection. Oak anchors this collection in 7-1/2" widths and 4 sided micro bevels. Planks up to 73" long make this a must have look to complement a wide range of design styles.



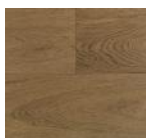
HORSHAM OAK



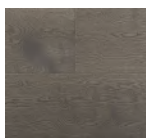
GLASGOW



DAWSONS OAK



LOUGHBOROUGH



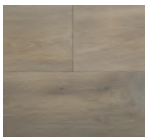
FURRY CREEK OAK



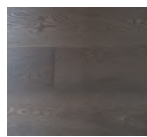
BLAVEN OAK



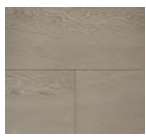
LETHENDY OAK



KESWICK OAK



ANTRIM OAK



EDINBURGH OAK

- Structure: 3-layers SOLID-CORE™
- Wear Layer: 1/8" or 5/32" (3mm or 4mm) dry sawn face
- Dimensions: 9/16" or 5/8" x 7-1/2" x RL (Up to 73")
- Edge Detail: 4 sided micro-beveled edge
- Finish: Wire Brushed or smooth - Smoked, Oil or UV Finish
- Gloss Level: 5 degree luster level
- Installation: T&G, Staple, Glued Down or Floated
- Suitable Location: On, Above or Below grade
- Radiant Heat: Compatible
- Warranty: Limited 35-Year Residential Finish, Lifetime Structural
- Certification: Floor Score & E1 CARB II



SEEKING E1 CARB II CERTIFICATION

